

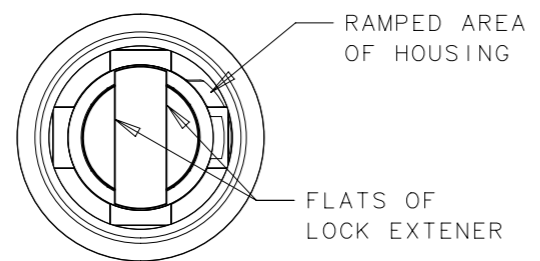
REVISION HISTORY			
REV	DATE	BY	DESCRIPTION
A	11MAY2017	LCR/CMS	PRN: P2017-1097

NOTES:
 A. FOR LATCH ASSEMBLY PART NUMBERS. MATERIAL AND FINISH SEE DRAWING J-CM-3 FOR SEALED ASSEMBLIES AND J-CM-6 FOR NON-SEALED ASSEMBLIES.

RECOMMENDATION:
 LOCK CORE SHOULD BE INSTALLED PRIOR TO ASSEMBLY INSTALLATION INTO PANEL TO ENSURE PROPER SCREW TORQUE IS REACHED WHEN CAM IS MOUNTED.

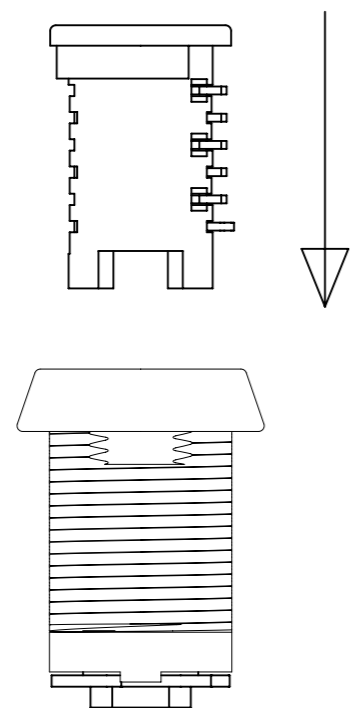
LOCK CORE INSTALLATION INSTRUCTIONS (CAM ROTATION "01" SHOWN)

1. THE FLATS OF THE LOCK EXTENDER SHOULD BE ALIGNED WITH THE FLATS ON THE HOUSING AS SHOWN. IF THEY ARE NOT, MANUALLY ROTATE THE LOCK EXTENDER SO THEY ARE.



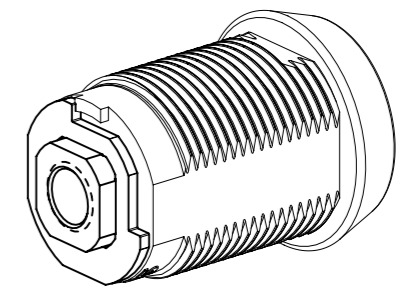
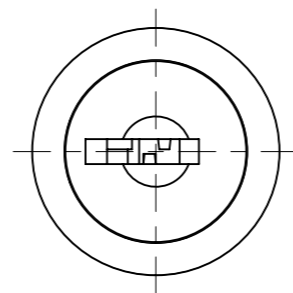
2. TAKE A LOCK CORE AND ORIENT THE BRASS WAFERS TO THE INTERNAL RAMPED AREA OF THE HOUSING.

NOTE: IF LOCK CORE IS TOOL OPERATED (NOT KEY OPERATED), ADD GREASE TO WAFERS BEFORE INSTALLATION FOR PROPER OPERATION. GREASE SHOULD BE COMPATIBLE WITH LOCK COMPONENT MATERIAL AND LATCH MATERIAL. GREASE VISCOSITY SHOULD BE LIGHT ENOUGH TO ALLOW WAFERS TO RETURN TO EXTENDED POSITION AFTER BEING DEPRESSED INTO LOCK BODY.



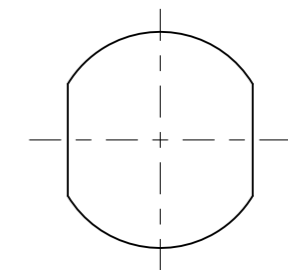
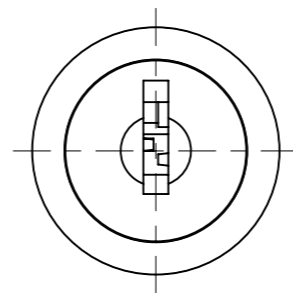
3. PUSH LOCK CORE INTO HOUSING UNTIL IT STOPS.

LOCK CORE INSTALLED UNLOCKED POSITION



4. INSERT KEY OR TOOL INTO LOCK CORE AND TURN TO VERIFY LOCKPLUG IS FULLY SEATED AND OPERATING PROPERLY AFTER INSTALLATION. NOTE THE SUGGESTED ORIENTATION OF THE LOCK CORE IN THE LOCKED POSITION.

LOCK CORE INSTALLED LOCKED POSITION



FOR REFERENCE:
 SUGGESTED PANEL
 PREPARATION
 ORIENTATION

THIRD ANGLE PROJECTION	MILLIMETERS [IN]	southco [®] CONNECT • CREATE • INNOVATE		
		DESCRIPTION CAM LATCH, CORE REMOVABLE LOCK CORE INSTALLATION		
TOLERANCES UNLESS OTHERWISE NOTED		SIZE	SYSTEM	DWG NO.
UP TO 0.5 ±0.1		A3	NX	J-CM-3-B
OVER 0.5 UP TO 6 ±0.2		DRAWN BY LCR DATE 12JAN2006 SCALE 1.5:1 SHEET 1 OF 1		
OVER 6 UP TO 30 ±0.4				
OVER 30 ±0.6				
ANGLES ±5°				
PER ASME Y14.5M-1994				

PROPRIETARY ITEM
 EXCEPT FOR USES EXPRESSLY GRANTED
 IN WRITING, INFORMATION DISCLOSED
 HEREON IS CONFIDENTIAL AND ALL
 RIGHTS, PATENT AND OTHERWISE,
 ARE RESERVED BY SOUTHCO, INC.